



Nether Stowe School

Headteacher: Glyn Langston-Jones

St Chad's Road
Lichfield, Staffordshire
WS13 7NB

Tel: 01543 263446 & 263487

Fax: 01543 414602

December 2019

Dear Parent/Carer,

As you may be aware, Mr Langston-Jones is currently on paternity leave and in his absence I would like to take the opportunity, before the Christmas break, to share some key messages and important reminders with you. We continue to make positive strides forward as a school, celebrating once again improved examination results over the summer. We continue to ensure the highest possible standards at Nether Stowe and implementing our new behaviour system this term has ensured that our expectations are clear. The partnership working between school and home is essential in ensuring that our high expectations are upheld by our students both at school as well as in our community. These high expectations enable students to leave school understanding how, within our society they are expected to conduct themselves. Accordingly, I urge you to read the information below carefully in advance of the new term.

Arrangements for the end of term

Year 11 Curriculum Support Week – Monday 16th – Thursday 19th December

Students in year 11 will be have a week of curriculum activities. Students studying Photography will have their mock exam during this week as well as D&T students using the workshop to complete the practical aspect of their final product. Students will also have additional time in English, Maths Science, IT and Sport. Attendance is essential in this week as it is an opportunity for students to learn and achieve in a different way.

Christmas Concert – Tuesday 17th December

Our annual Christmas concert starts at 7pm on Tuesday 17th December. Entrance to the evening is free. Tea, coffee and mince pies will be available. All proceeds will go to charity. Come along and enjoy our festive event.

Christmas Lunch & Jumper Day – Thursday 19th December

Students will be able to come into school wearing a Christmas Jumper for a donation of £1. This money will go to charity. It important to note that this is not a non-school uniform day. Students will be permitted to wear their jumper under their school blazer. We will also be holding our annual Christmas Lunch on this day. Students will be able to pay for this as normal through the parent pay account.

Last Day of Term – Friday 20th December

School ends for students on **Friday 20th December**. In line with other local schools, students will be dismissed from 12:05 onwards, with the winning college being dismissed first.

Email: office@netherstowe.com **Website:** www.netherstowe.com **Twitter:** @netherstowe



NETHER STOWE
SCHOOL



THE SUTTON PARK
TEACHING SCHOOL ALLIANCE



Arthur Lamy
Learning
Partnership

Arrangements for the start of term in January

Monday 6th January is designated as an ATLP staff training day. Students will return to school on **Tuesday 7th January** at **8:40am**.

Year 11 and 13 Mock Examinations – Week Beginning 13th January 2020

For two weeks from Monday 13th January, year 11 & 13 students will have their mock exams. This is a final opportunity for students to practise before they sit their examinations in the summer. These mocks inform teachers on what they need to plan and prepare for the remainder of the year so it is important that students use the time over the Christmas break to revise.

Achievements and Successes

Partnership Working

Being part of the Arthur Terry Learning Partnership (ATLP) has enabled our staff to work with other colleagues in different schools to improve the quality of teaching and learning here at Nether Stowe. Teachers have been working hard at developing a new and exciting curriculum for students alongside our colleagues from across the Partnership. A review undertaken in November by ATLP highlighted the high standards we have in our classrooms and the experiences we offer for our students. They were also very complimentary of the high expectations witnessed in the visit around the whole school.

Duke of Edinburgh Award Scheme

Each year it never ceases to amaze me the number of staff and students that come together to take part in the Santa's Sleigh event, organised by the Round Table. This year I'm so proud to announce that we raised £700 during the evening. Well done to everyone that took part and came to support.

Sporting Achievements

We have had numerous sporting triumphs this term but none more memorable than our Year 11 netball girls. Our girls became District Netball Champions for the first time, beating King Edward VI in the final. It was such an achievement that even King Edwards, as reigning champions, left the Trophy 'at home', such was their belief they would win it again. Well done girls, we are very proud of you!

Science, Technology, Engineering & Maths (STEM)

Mrs Hunt in our Science Department, organised a number of STEM activities across the school for different year groups. Students have had opportunities to go on a variety of school trips through this. Students have been making boats, developing computer control systems and robotics.

Mental Health Awareness

I'm so pleased to hear the great work that Mrs Chilver and Mrs Bulpit are undertaking, both in terms of supporting students and raising the profile of mental health. Mental Health is such an important issue for students in school and I'd like to take the opportunity to remind you that support is available in G5 at lunchtime. We now have a group of year 10 and 11 students who have been trained to be Peer Mentors through the YMCA programme.

Staffing update

We are pleased to welcome back to school both Miss Fairbrother and Mrs Thompson from maternity leave and say a thank you to Miss Lyons for stepping in this term in Mrs Thompson's absence.

I would like to congratulate Mrs Phillips on her appointment as our Transition and Student Leadership co-ordinator.

After 15 years working at Nether Stowe, Ms Fendick, our Cover and Timetable Manger has decided the time is right to take retirement. We would like to take the opportunity to say thank you to her for her dedication during her time here at school. We wish Ms Fendick a long and happy retirement.

Mrs Wooding-Wilkins will be overseeing a New Faculty of subjects which will see RE, ICT, Business & D&T come together.

Knowledge Organisers

Knowledge Organisers at Nether Stowe are a crucial part of the learning that takes place both within lessons and as part of home learning tasks. They are there to support students with knowledge retrieval and ensure that we are helping to support the improvement of their long term memory retrieval through the use of spaced practice. We have seen a great improvement in the quality of homework and great independence shown in using their knowledge organisers to help support their own learning.

Please encourage your child to use these as part of their home learning and an aid in preparing for progress checks and milestones.

Attendance and Punctuality

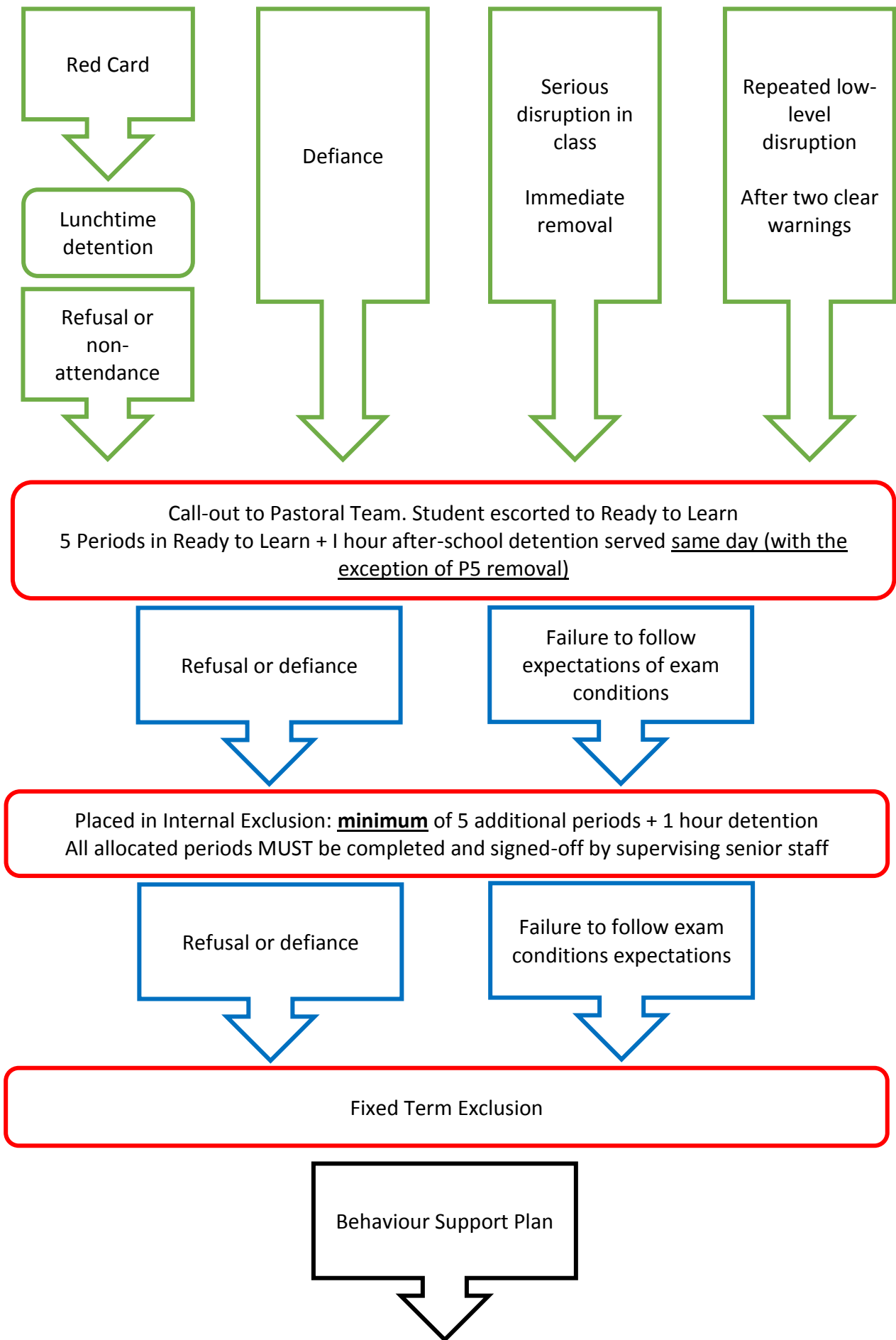
As you will be aware from previous letters, good, punctual, attendance at school is vital for good progress. We will have an even greater focus on promoting and maintaining good attendance this year.

The school target for all students is a **minimum of 96%**. This equates to no more than 8 days of absence from school. Research shows that students with less than 95% attendance, on average, perform less well than those with attendance above 95%. We know that the vast majority of students, and parents, take attendance very seriously and I thank you for your continuing support to ensure good attendance right from the start of the year.

Rewards and Behaviour Policy

As a reminder, below is the flow chart we issued at the end of last term around our behaviour system:

Behaviour Flow Chart



Uniform

At Nether Stowe, we pride ourselves on the high standards of uniform and appearance our students maintain. As a rule, students adhere to our expectations and wear their uniform with pride both in school and on the way to and from school.

Here are a few reminders of the key points to ensure a positive start to the new term:

- Trousers should be plain black and business style (not tight or clingy; without zips or added buckles)
- Skirts must be knee length – in a material which does not ride up as students walk
- Trainers are not allowed to be worn, unless there is a medical reason, for which a note from a medical professional will be required
- Haircuts must be no less than a grade 2 and should not be extreme in either style or colour

Equipment

Being fully prepared for lessons is a fundamental expectation of all our students. We have had a real push on this over the past few weeks, which has enabled a sharp start to lessons for all and ensured students can access their learning successfully.

Students are required to have the following with them, as a minimum, each day:

- Black Pen
- Green Pen
- Pencil
- Eraser
- 15cm Ruler
- Compass
- Protractor
- Scientific Calculator

In order to remain hydrated, it is also advisable for students to have a re-fillable water bottle with them. This is not something which will be provided at reception. Students have the opportunity to fill their bottles up at the water fountains before school, at break and at lunch time. Students are not permitted to leave lessons to fill their bottles unless there is a known medical reason.

Thank you for your continued support in ensuring your child is fully equipped and appropriately dressed for their school day.

Finally, I hope you have a safe and restful Christmas and look forward to our return in January.

Yours faithfully,

Mr A Shaw
Deputy Headteacher

Email: office@netherstowe.com Website: www.netherstowe.com Twitter: @netherstowe



NETHER STOWE
SCHOOL



THE SUTTON PARK
TEACHING SCHOOL ALLIANCE



Arthur Lemy
Learning
Partnership

