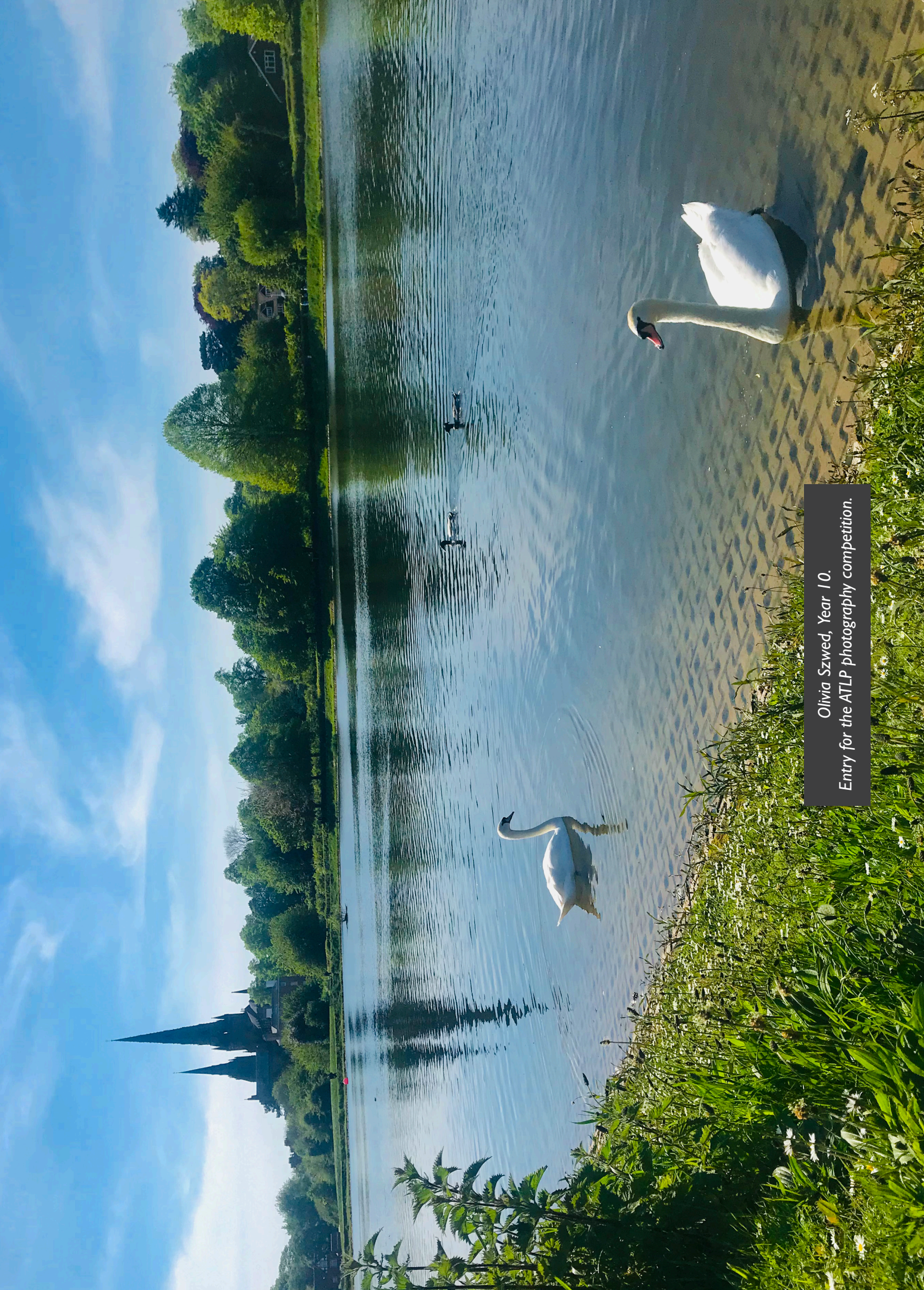




# Nether Stowe School

*Aspire to Excellence*





Olivia Szwed, Year 10.  
Entry for the ATLP photography competition.



# Welcome to **Nether Stowe School**

## *Aspire to Excellence*

We are a school proud of our inclusive ethos and warm welcome. Above all, we are a supportive community where every pupil and adult is cared for.

At the heart of the vision and values of the school is a highly ambitious and aspirational focus on academic excellence, enabling every pupil to succeed and thrive.

We develop and nurture individual talent to create kind, ambitious, self-confident, resourceful and resilient young people who are proud to contribute to their school and the local community and who are ready to face the challenges of the modern world.

Traditional values of strong discipline, good behaviour and respect are also core to our ethos: we challenge, support and inspire everyone to be the absolute best they can be.

The relationship and partnership we forge with our parents is essential and we are strong in our belief that, through working together, we can achieve something amazing.

We look forward to welcoming you and your child.

**Glyn Langston-Jones**  
**Headteacher**



*“Staff in the school know every pupil and Sixth Form student very well. As a result, the care for their personal development and well-being is good.”*

## **Vision & Values**

### **Excellence and Aspiration**

Our aim is to make sure every pupil aspires to excellence in everything they do.

### **High Expectations**

We believe every student should be given the opportunity to thrive and reach their full potential. Through consistently high expectations, we will prepare and equip our students for their future and give them the best possible chance of achieving their aspirations.

### **Community**

We are a collaborative community where every student is valued, cared for and included. Our learners are encouraged to be resilient, independent and proud of their school community.

### **Success**

We equip all students with the knowledge, skills and confidence they need to flourish and succeed.

# Excellence in Teaching & Learning

---

We aim to deliver consistently high-quality learning experiences for all students. To meet this aim we develop - in all staff and students - a growth mindset. Regardless of how good we are, we can be even better!

Our team of innovative and well qualified teachers benefit from a bespoke professional development program which makes use of expertise within school as well as drawing on additional external resources from our partnership with ATLP, local universities and Teaching Schools. The whole process is quality assured to guarantee we meet our aims.

All lessons fit within the Nether Stowe teaching and learning framework which ensures consistency for all alongside individual challenge. Every opportunity is taken to develop students as independent learners and leaders both inside the classroom and through extra-curricular activities. In lessons, students receive regular progress checks with detailed feedback to help them as they move towards GCSE and A Level qualifications.

## An innovative approach to curriculum

---

### The purpose of the curriculum

The ambition at Nether Stowe School is to provide a high-quality education that transforms the life chances of our students through a 'knowledge engaged' curriculum.

Our framework of cognitive education enables children to think independently and contribute positively to society and the wider world.

### The intent of the curriculum at Nether Stowe School recognises the importance of:

- Building and applying knowledge
- Developing cultural capital to address social disadvantage and ensure equity for all our students
- Growing our students' understanding of meta-cognition and meta-memory to improve their learning
- Collaborative planning to ensure a sequenced curriculum, developing well-ordered knowledge in our students' long-term memory

### To realise this ambition the curriculum at Nether Stowe School has been developed around four core principles of cognitive thinking strategies:

- Teaching the right knowledge
- Retrieval practice
- Spaced practice
- Application of knowledge

We are committed to a broad and rich curriculum which provides for a high level of ambitious academic, vocational and personal success. Our curriculum at KS4 is open to all students and places the EBacc offer at the heart of choices for students, whilst also providing excellent progression routes to Sixth Form, Higher Education and beyond.





*Talented teachers*  
Engaging experiences  
*Successful students*





# Pastoral Care at Nether Stowe

---

Academic excellence and personal development go hand-in-hand and that's why we are committed to developing the whole child: both inside and beyond the classroom.

Our excellent Pastoral system aims to support our students to become well rounded, confident, resilient young people, equipped not only with academic qualifications, but also with the personal tools required to be successful in life.

Our experienced Pastoral team know our students as individuals and provide highly effective and targeted support when needed, as well as referrals to other agencies to enlist more specific expertise as required. Alongside the College Heads, who are established classroom practitioners, the non-teaching Pastoral Heads are available throughout the day to support students to overcome personal barriers, helping them to engage successfully with learning and school life as a whole.

Students feel part of the whole school, promoting values of mutual respect and tolerance. Our College system provides students with a sense of identity, pride and aspiration, as well as the opportunity to develop leadership skills and positive peer mentoring.

We have four Colleges: Trent, Beacon, Wall and Chase which sit at the heart of the school community. Our College structure also means students integrate quickly into school life and, as each college has its own identity, they quickly become part of the Nether Stowe family. Recognition of achievement is central to our ethos as a school. We hold termly, high-profile College celebrations which recognise pupils for their academic and personal achievements.





# Nether Stowe Sixth Form

At Nether Stowe, the Sixth Form is at the heart of the ambition and aspirations we hold for our students. Our core value of academic excellence ensures we offer our students the best opportunities, experiences and teaching to enable them to excel. Our Sixth Form is a welcoming and purposeful environment where resilience, independence and collaboration are encouraged and fostered. We shape the adults and leaders of the future and provide the freedom, responsibility, knowledge and skills to enable all to thrive.

The strength of our Sixth Form lies in our size. Many students, making the transition to large Sixth Forms or Colleges, struggle with the change. At Nether Stowe, our team of expert and highly qualified teachers know our students extremely well. The individual attention and support they receive through smaller class sizes and individual coaching enables each student to excel and flourish.

## Information, Advice and Guidance

We provide a broad curriculum with a mixture of A Level and vocational qualifications to suit the needs of our students. Everyone has the opportunity to take part in a range of extra-curricular and enrichment activities as well as tailored work experience. With over 80% of our sixth formers applying to higher education, students are enrolled in a fully inclusive post 18 support programme with advice and guidance delivered from our specialist team. Students are encouraged to attend University Open Days and all Year 12 students attend a higher education fair at the NEC as part of their PSHE programme. There is further support available for those students opting for employment, an apprenticeship or a gap year.

## Applications

There is further information included at the back of this prospectus, outlining the application process, courses on offer and entry requirements.



Hannah Riley: Head of Sixth Form



Karen Bulpitt: Sixth Form Student Support



*“The school supported me every step of the way, getting me on the right path to begin with, ensuring I wasn’t making the same mistakes again, regularly checking work providing feedback and checking I was on target to achieve my grades.*

*The school was understanding throughout and helped me draw on my true potential. As a result I have been offered two scholarships to study mathematics at University. If Nether Stowe hadn’t intervened I would have been stuck without options for higher education.*

*The staff have always taken a personal interest in my success and I owe them all a very big “thank you” for all the time and effort they have invested in me”*



# An exciting extra curricular offer

Nether Stowe has an excellent reputation for our extra-curricular programme of support and events. As well as a huge range of activities provided through the College system, we have a great range of facilities in school to encourage and develop excellence in Art, Drama, Music, PE and more. Moreover, our outstanding Duke of Edinburgh provision is incredibly popular and we provide great experiences abroad such as skiing and the Sri Lanka excursion.

- Duke of Edinburgh Award
- ACASTOWE: school choir
- Very Little Big Band
- Guitar Club
- Soul Band
- Dance
- 'Parlez Plus Fort': Year 11 French
- Year 10 Speaking Practice
- French Boulogne visit (Y7)
- School shows
- Lichfield Mysteries
- Author Visits
- Maths Challenge
- Maths STEM: Lake District
- Visit to the Houses of Parliament
- Skiing
- Cricket
- Tennis
- Athletics
- GCSE Photography and Art boosters
- Sutton Trust University residentials
- Maths: Imperial College, London
- Rounders
- Sri Lanka visit
- Birmingham University Maths lectures
- Tate Modern and Tate Britain visits
- Stafford College Art & Design workshops
- GCSE Astronomy
- History revision
- Weekly RE revision
- Science Big Bang
- Textiles club
- Trampolining
- Netball
- Handball
- Fitness
- Basketball
- Table Tennis
- GCSE PE and A Level PE booster sessions



The Senior Student Team





# The Duke of Edinburgh Awards

---

At Nether Stowe we run the Duke of Edinburgh award for Bronze and Silver and also offer Gold opportunities. During the year the students have several practice walks to prepare them for their practice and qualifying expedition. It's not all walking though! There are plenty of opportunities for reward days and team building.

The DofE programme has been transformational in raising aspirations and developing the skills that young people need to be resilient and productive citizens.

A fun adventure and major challenge, three progressive award levels (Bronze, Silver and Gold) and a wide range of activities offer endless possibilities. Millions of young people in the UK have already taken part in the world's leading youth achievement award – pushing personal boundaries, gaining new skills and enhancing their CVs and university applications. At Nether Stowe it's always time to get involved and go the extra mile!



*“My DofE has made me realise I can be whoever I want to be.”*

*“It’s been a challenge both mentally and physically It’s tough but fun! A roller coaster of emotion, a great experience and very rewarding.”*

*“Not always easy, not always fun but you feel a great sense of achievement at the end.”*



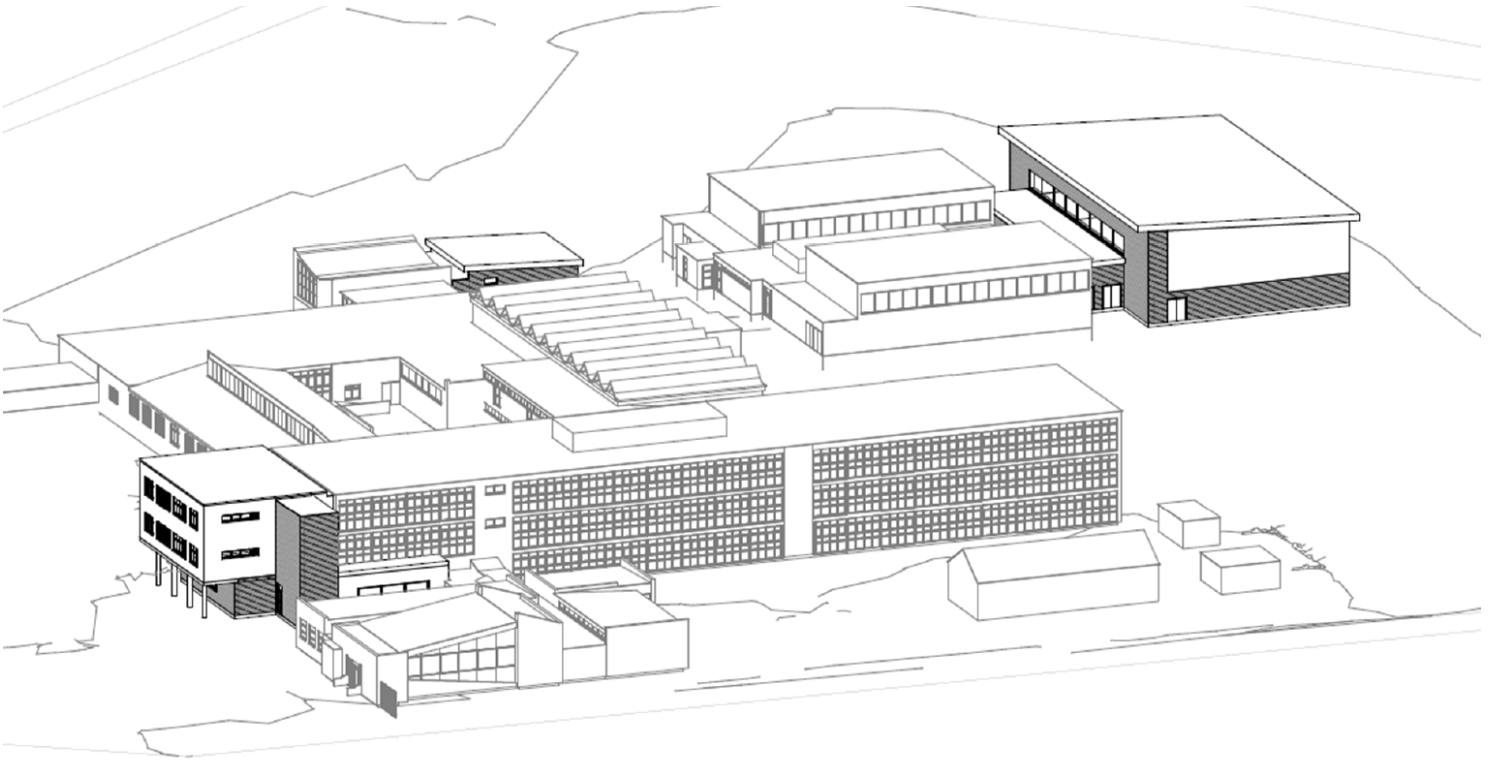
*“I feel more confident. It has helped with my social skills, I’ve made new friends, spoken to other students I wouldn’t have spoken to and learnt new things about them and myself; if I push myself I can achieve a lot more than I thought.”*

# Building a school for the future.

---

Over the coming months, pupils will witness a number of exciting developments and changes to the school. We have significantly invested in improving our facilities and learning environment to provide the best possible experience for all of our students. Pupils will see a number of changes, including:

- An extension to the front of school, including new classrooms and a new reception area.
- New Sixth Form area
- A new state-of-the-art Sports Hall and changing facilities
- Refurbishment of classrooms
- Investment in IT
- A new learning resource centre



---

## Nether Stowe is proud to be part of the Arthur Terry Learning Partnership

---

The Arthur Terry Learning Partnership is a highly regarded multi-academy trust of 12 schools and one teaching school who work together to improve standards and raise performance across a wider alliance of schools. They share our core vision and values that every child has the right to be a powerful learner and that education can shape lives and transform communities.

This is superb news for the school and wider community and a wonderful opportunity for Nether Stowe to enhance our provision and secure the best future for our students, families and local community. By being part of an established partnership of likeminded schools, our school will have access to even greater opportunities and we will benefit from this collective experience and expertise. We know that schools are stronger when they work together.

The partnership shares our commitment to excellence in teaching and learning and putting children at the heart of everything we do. Hub communities work together to affect change and create a positive future for all schools. The opportunities to drive forward school improvement and make our school even stronger and more successful are exciting - as is the potential impact of what we can achieve as a partnership.



Arthur Terry  
**Learning  
Partnership**







## Nether Stowe School

St Chad's Road  
Lichfield  
Staffordshire WS13 7NB

**T:** 01543 263446 & 263487

**E:** [office@netherstowe.com](mailto:office@netherstowe.com)

**W:** [www.netherstowe.com](http://www.netherstowe.com)